

BHARATH THE INDIAN PICASSO





- One point perspective
- Illusion of depth and space on a two-dimensional surface
- lines and objects converge to a single point on the horizon line
- This helps the objects in the foreground appearing larger and closer, and those in the background smaller and farther away.

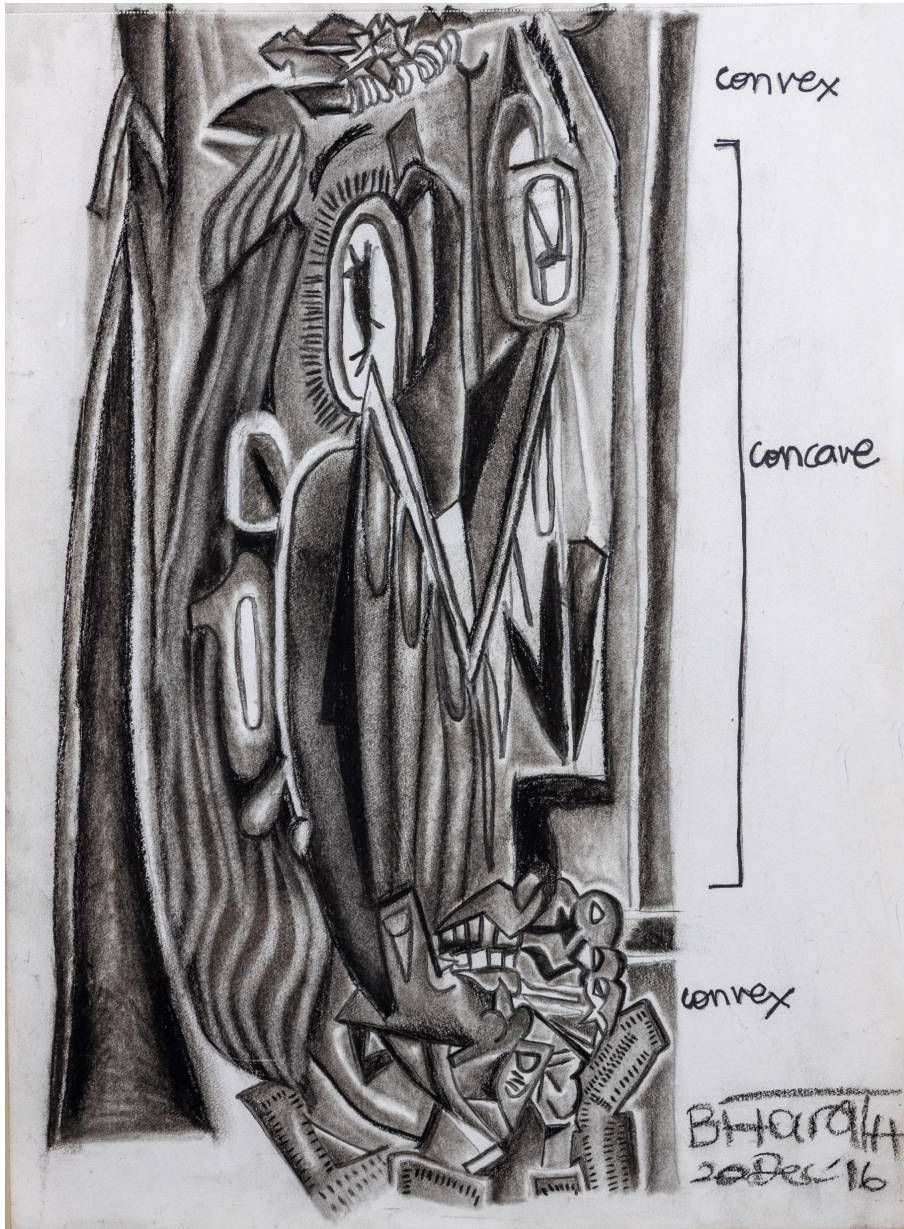
Guernica, Pablo Picasso
Oil on Canvas
349x776 cm



19 x 26 inch



- This powerful technique can create a wide range of effects, from realistic and naturalistic scenes to more stylized and abstract compositions.
- It is frequently utilized in architectural drawings and design, as well as in landscape and still life paintings.
- Bharath Rajpal has not only incorporated one point perspective in his version of "Guernica" , but also in his other compositions as well.
- Overall, one point perspective is a valuable tool for artists to convey the illusion of depth and space in their work.
- It demands careful attention to detail and a keen eye for composition, but when executed well, it can yield powerful and striking results.



- Use of concave and convex forms in his artworks
- These two types of art forms use curves to create depth and visual interest.
- Concave art involves curves that face inward, creating a sense of depth and directing the viewer's attention towards the centre of the piece.
- This type of art can be three-dimensional, and can be created in various mediums such as sculpture, painting or digital art.
- Concave and convex art forms both serve to create visual interest and depth, but they achieve different effects.
- Concave art draws the viewer inward and encourages contemplation, while convex art expands outward, evoking energy and playfulness.
- Both art forms have the potential to create impactful and memorable pieces that engage the viewer's senses and imagination.





9.5"x 14"

10"x 14"

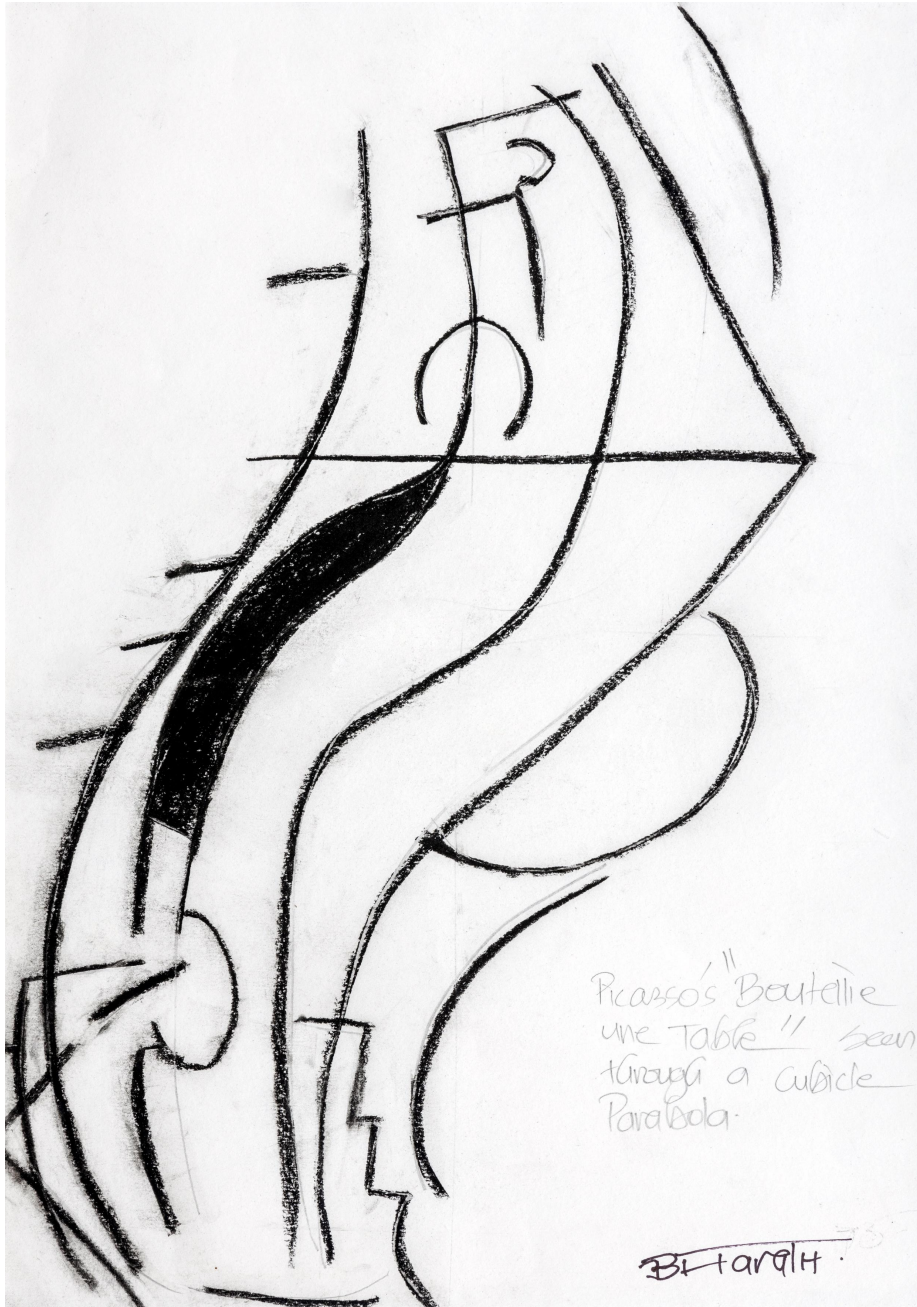




14"x10"



14"x10"



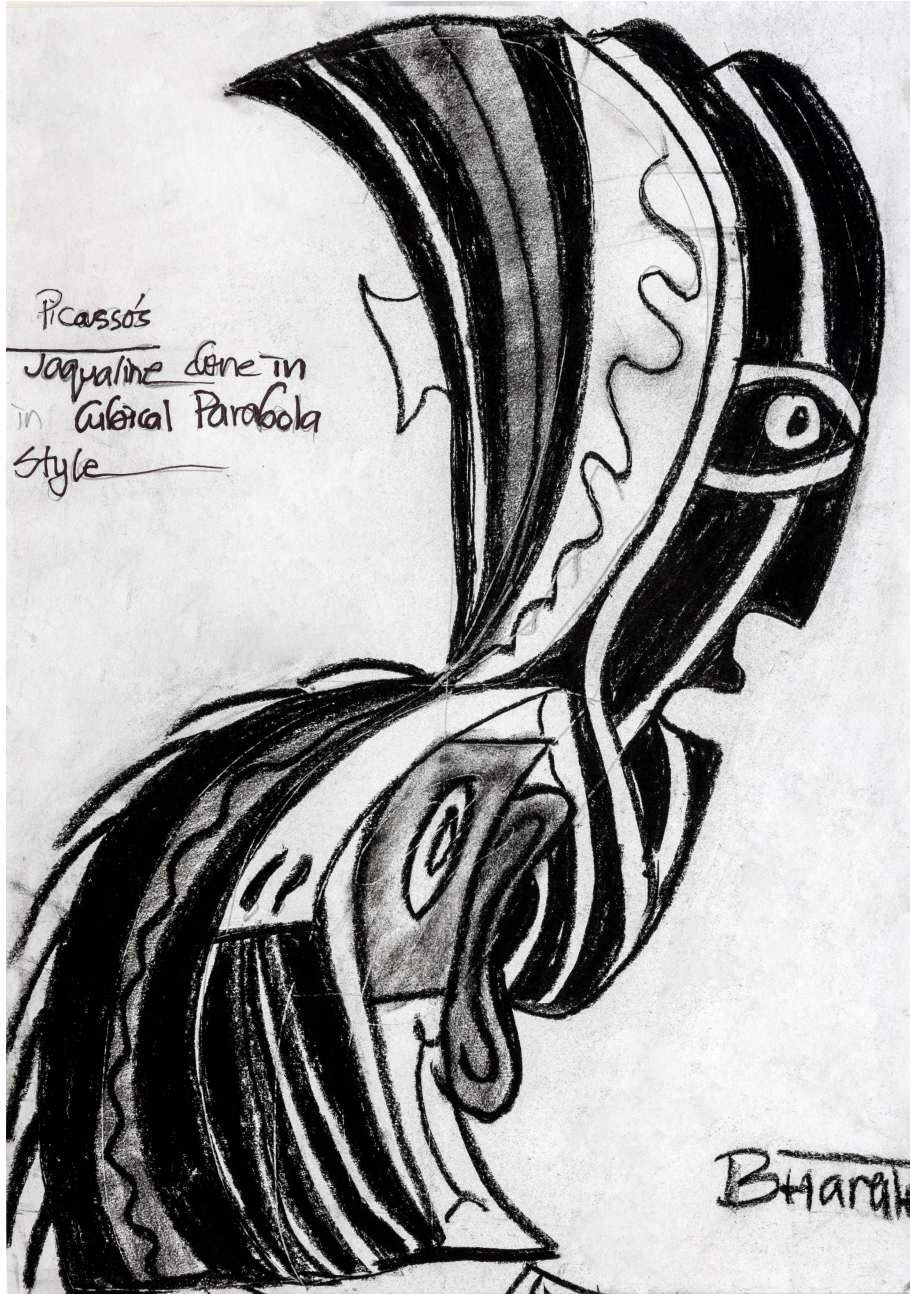
Cubic Parabola

- Cubic Parabola- a symbol of elegant simplicity and captivating curves that has enchanted from generations.
- Its unique property length equal to its projection on the X-axis –makes it a perfect muse for artistic expression
- incorporating its smooth lines into stunning works of charcoal art.
- The gentle curves and clean lines of the cubic parabola convey a sense of balance and harmony, lending a touch of sophistication and grace to each piece.
- Beyond its aesthetic appeal, the cubic parabola has found practical use in the world of art. Its seamless transitions make it ideal for creating motion graphics and architectural features, adding depth and dimension to any project.

11"x15.75"



15.5"x11



-For Bharath Rajpal, the cubic parabola is a powerful tool in his artistic arsenal- a timeless favorite among creatives seeking to elevate their work. Its inherent elegance and versatility continue to inspire and captivate artists across a multitude of disciplines.

15.5"x11

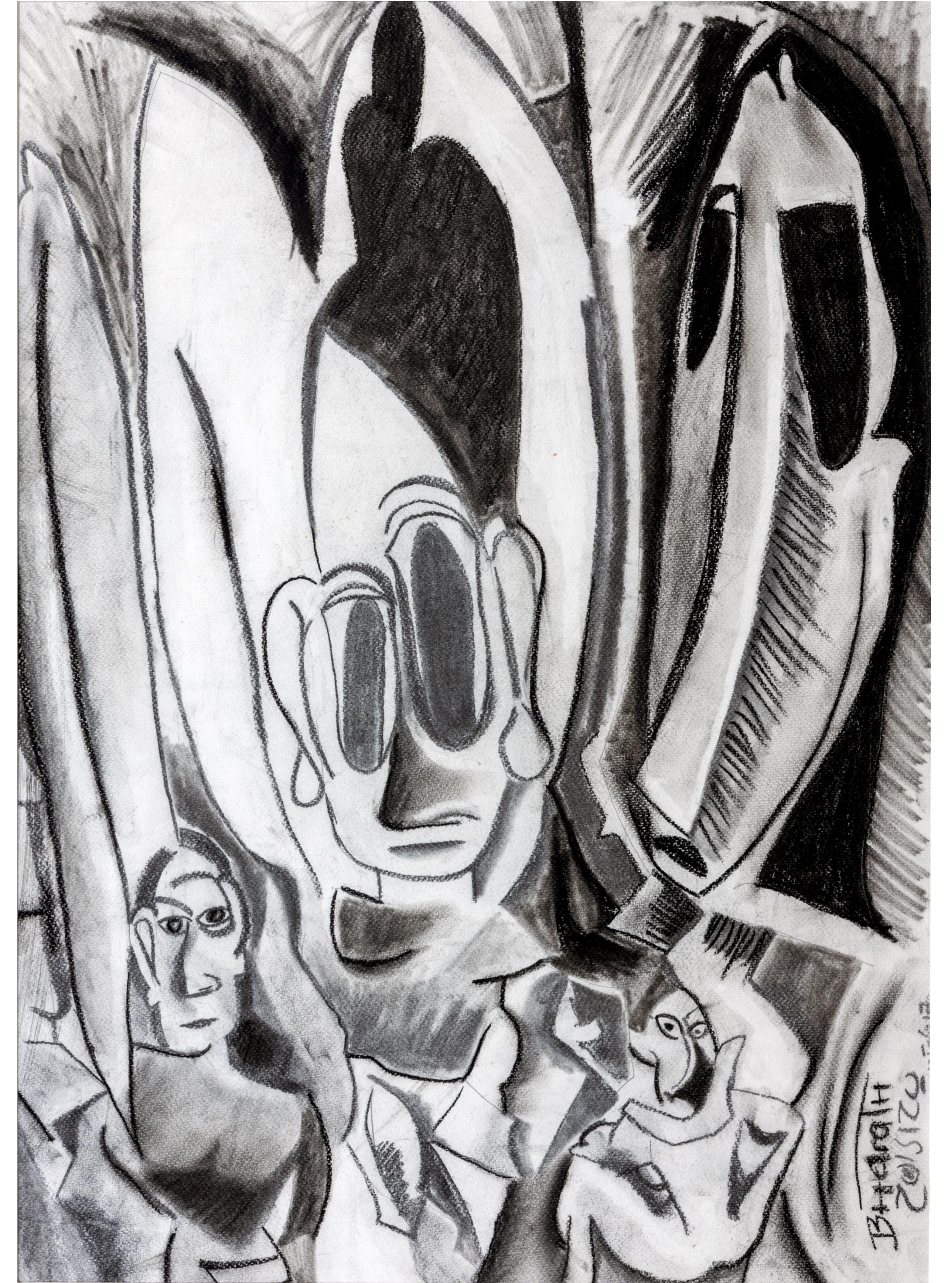
-can be described as a metamorphosis-a journey of transformation, growth and evolution.

-from humble beginnings, Rajpal's passion for art drove him to explore and experiment with various mediums and techniques, constantly pushing the boundaries of his own creativity.

-Like a butterfly emerging from its chrysalis, Rajpal's art is a reflection of his own journey of self-discovery and transformation.

- His works are a testament to the power of perseverance, dedication and passion – a reminder that even the smallest of beginnings can lead to the most beautiful of creations.

19"x27"



-He imagined famous Jonny Bravo into pixelated abstract version of itself.

-By transforming Jonny Bravo into Glitch art, Bharath Rajpal has added new layer of complexity and intrigue to the character's already iconic image. The distorted and fragmented appearance of the character not only catches the eye but also creates a sense of movement and energy, adding to the character's already dynamic and boisterous personality.

-glitch art style showcases the boundless creativity and innovation of modern digital art forms, while also paying homage to a beloved cartoon character that has captivated audiences for decades.

11"x15"



Art of Faces

Bharath's art of faces is an awe inspiring blend of Picasso's influence and the concave-convex style, which is a remarkable exploration of form and perspective.

-this style is an incredible amalgamation of contrasting concave and convex shapes that brilliantly creates a three-dimensional effect on a flat surface. When this style is applied to the portrayal of faces, it can produce a mesmerizing and haunting effect. With the use of concave shapes that curve inward, the illusion of depth and shadow is created, while convex shapes that curve outward, produce an illusion of highlights and protrusions.





- Rajpal's specialization in the concave-convex style of facial portraiture is a testimony to his unique and expressive works of art.

The style captures the essence of the subject in a realistic yet surreal way. Whether it is a portrait of a loved one or a famous figure, the concave-convex style of Rajpal's art can infuse a face with an incredible sense of character and depth, which is utterly captivating. Through his clever use of form and perspective, Rajpal was able to bring his creations to life, making them a true work of art that is both beautiful and mesmerizing.



Lady with Two Dogs

Bharath Rajpal's painting of a lady with two dogs in the cubic style is a stunning showcase of how simple shapes can produce complex and intriguing results.

- The painting draws the viewer in with its use of interconnected cubic forms, arranged in a structured and visually pleasing manner.
- The lady and her two dogs are the focal point of the painting, positioned in the center and expertly rendered with straight lines and sharp angles.
- The use of these geometric shapes creates a sense of depth and perspectives, making the subjects seem almost three-dimensional.
- The shapes of the dogs are a beautiful contrast to the hard edges of the cubes, adding a sense of warmth and organic beauty to the painting.

16 x 20

-Meanwhile, the bold and contrasting colors used by Bharath Rajpal bring a sense of energy and vibrancy to the piecemaking it truly stand out.

Beside lady with two dogs this painting is also a masterpiece of the cubic style art form, showcasing the power of geometry and color in creating beautiful and captivating works of art.

14 x 18.5



-SUBWAY MUSICIAN PLAYING FLUTE IN PARIS

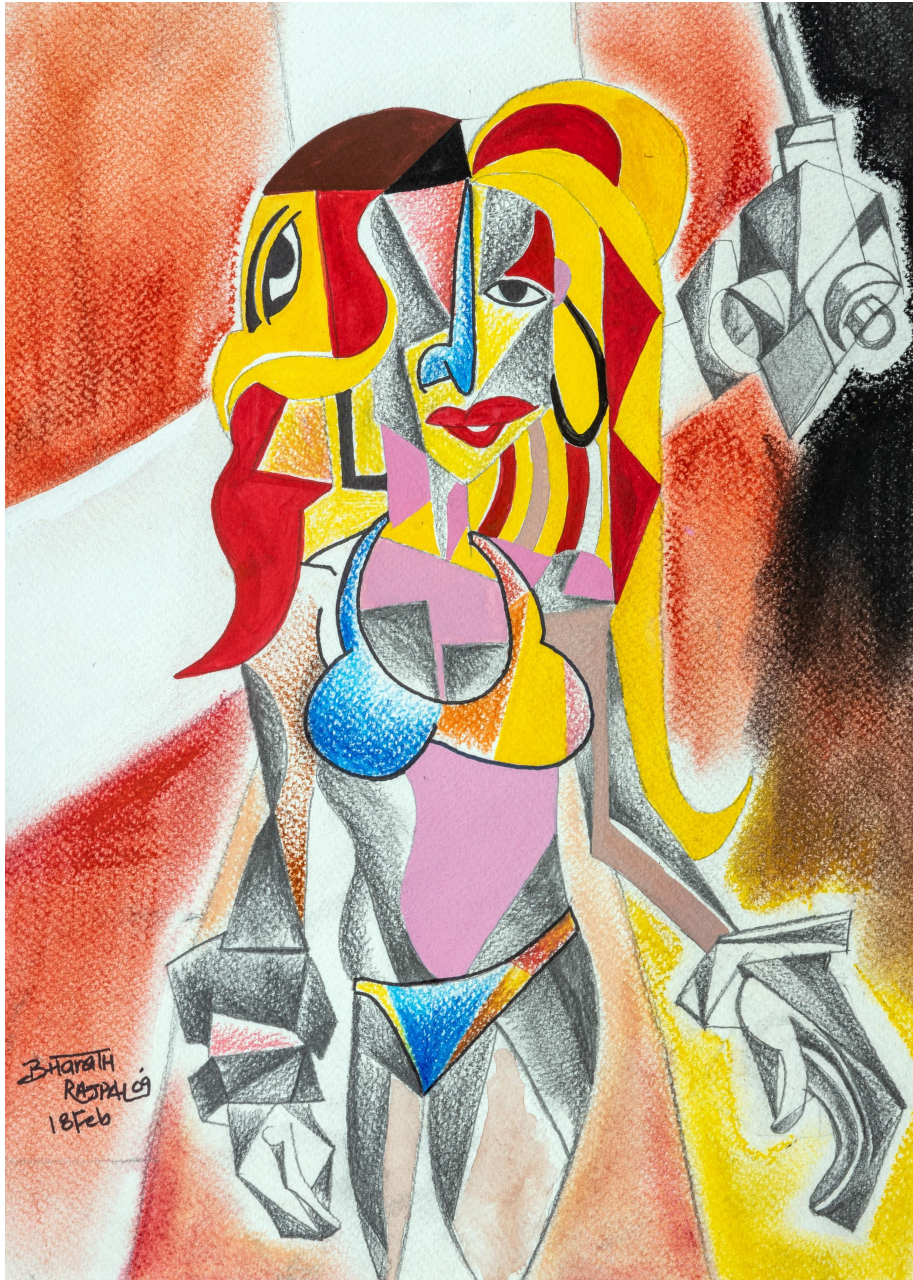
- Done in black and white, adding to its simplicity yet adding depth to the overall piece.
- Musicians body is fragmented into geometric shapes , with sharp lines and angles, typical of cubism style.
- The flute he is playing is also depicted in a fragmented form, adding to the abstract feel of the painting.
- The subway station is also in cubic style, with the tiles on the walls and floors depicted using geometric shapes, straight lines, and sharp angles.
- Overall effect of the painting is mesmerizing, creating a sense of movement and dynamism, capturing the essence of the musician's performance.

10.5" x 14.5"





- The use of black and white adds a dramatic effect to the painting, with the contrasting colors emphasizing the sharp angles and geometric shapes. The absence of color adds to the overall abstract feel of the painting.
- In conclusion, the "Subway Musician Playing Flute in Paris" is a stunning example of the cubism art style, with its use of geometric shapes, sharp angles, and abstract forms, capturing the essence of the musician's performance in a mesmerizing way.



The art work "female model on ramp in cubic art form" is a stunning example of the use of geometry and structure in art.

Created by artist Bharath Rajpal, this piece features a female model walking down a ramp, surrounded by cubic shapes that create a sense of depth and perspective.

The model herself is depicted with a series of interconnected cubes, creating a unique and visually stunning effect that draws the eye and captures the imagination.

-is a captivating and thought-provoking work of art that demonstrates the power and versatility of geometric forms in the hands of a skilled artist.

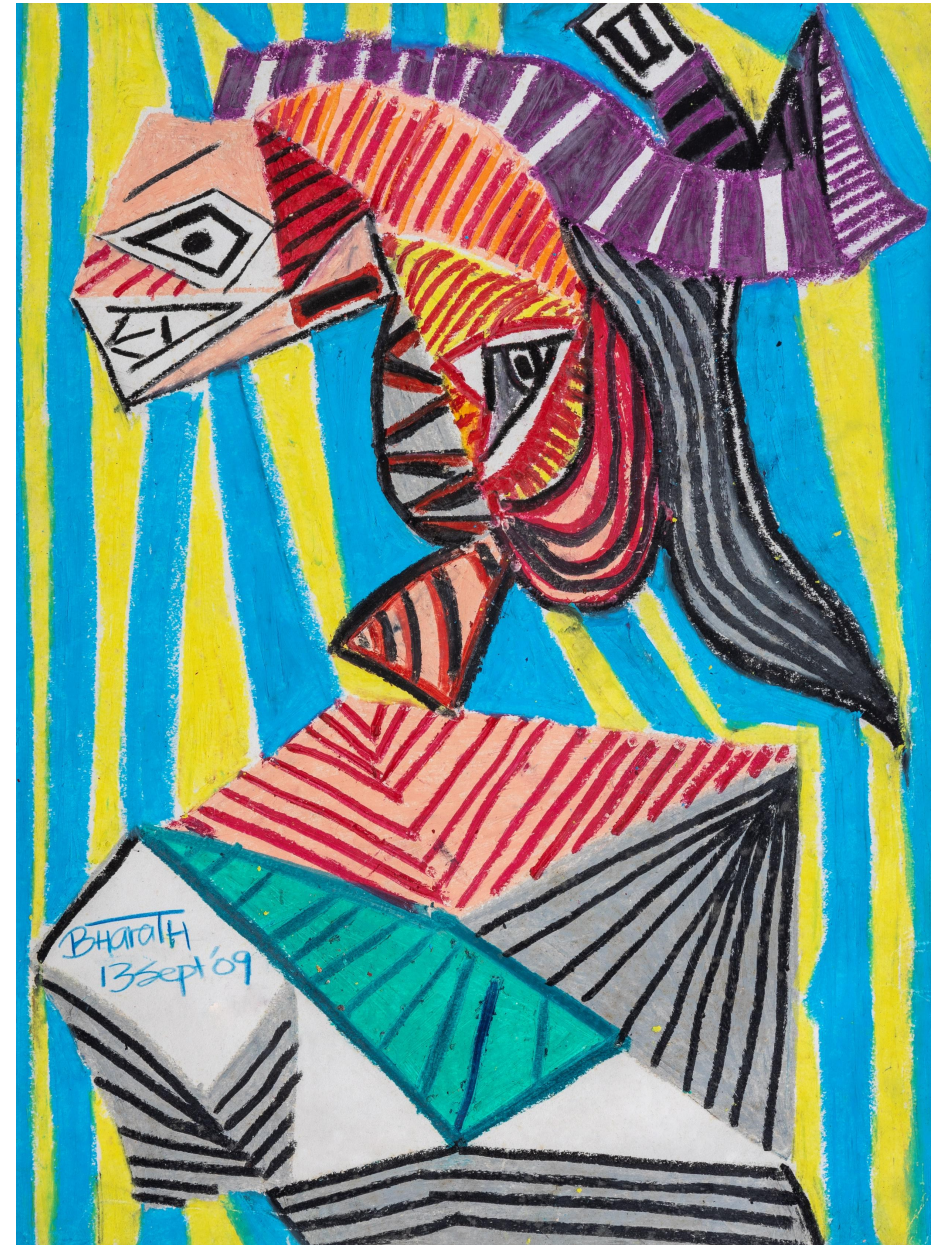
- It is a testament to Bharath Rajpal's talent and creativity, and a wonderful example of the way in which art can push boundaries and challenge our perceptions of the world around us.

10.5" x 14.5"

-The use of cubic forms in this piece is particularly striking, as they are arranged in such a way as to create a dynamic and fluid sense of movement. The straight lines and sharp angles of the cubes contrast beautifully with the flowing curves of the model's body and clothing, producing a mesmerizing effect.

- The bold and contrasting colors used in this artwork also add to its overall impact, with the use of bright reds, blues and yellow emphasizing the geometric nature of the piece.

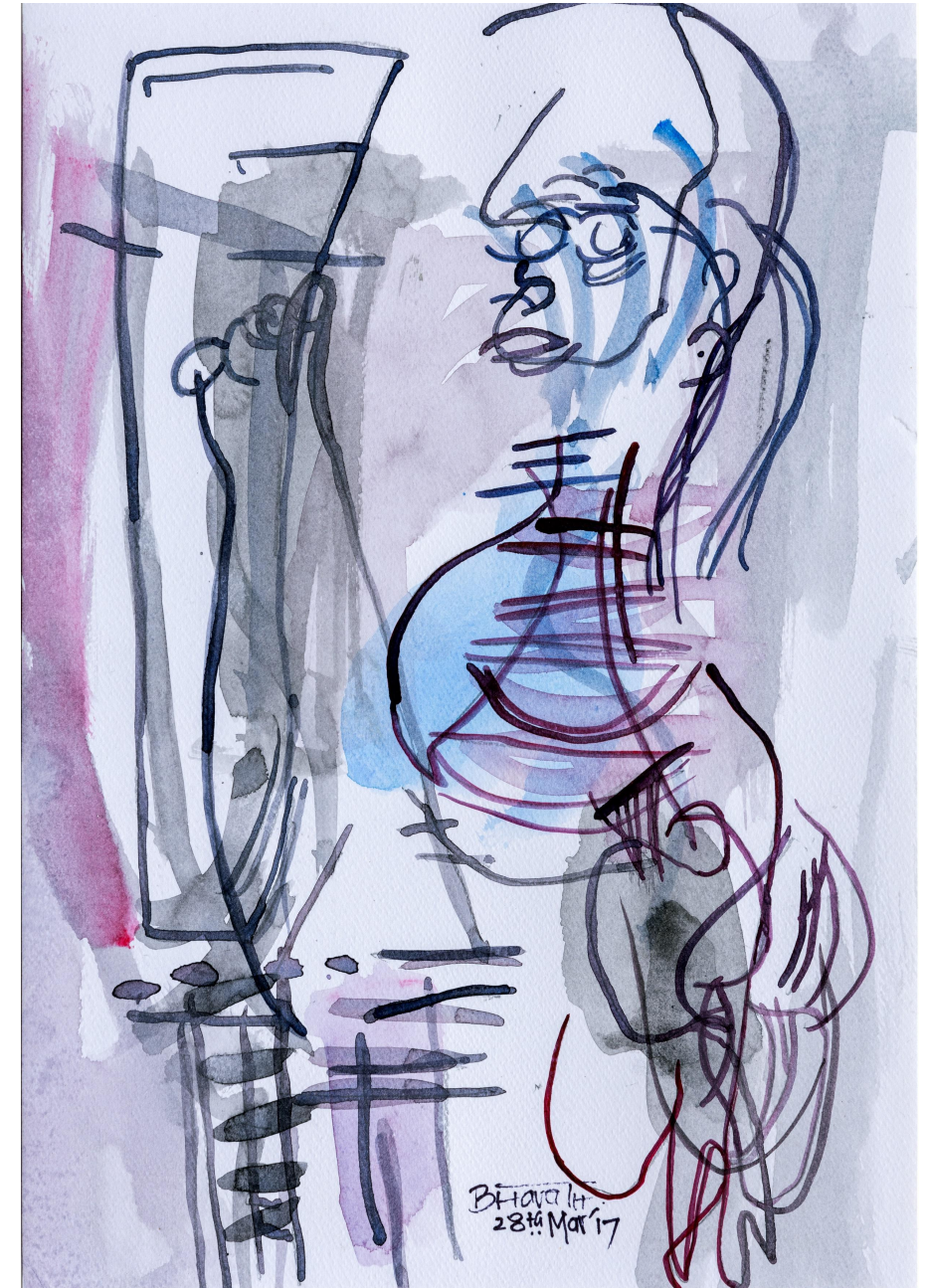
16" x 20"





29 x 20.5

- The artwork of a lady doing yoga in front of the mirror is a beautiful depiction of the practice of yoga as well as self-reflection. In this artwork, the lady is shown standing in front of a mirror in the artwork symbolizes self-reflection and introspection, which is an integral part of the practice of yoga.
- It encourages the viewer to contemplate on the self and focus on inner awareness.
- The lady's pose is executed with precision and grace, highlighting the beauty and complexity of the human form.
- The lines and shapes used to depict her body are clean and crisp, with a hint of abstract elements that add depth and dimension to the piece.
- The choice of colours is also noteworthy in this artwork. The soft pastels used for the background and the vibrant colors create a harmonious and balanced color scheme.
- Beautiful representation of the combination of yoga and self-reflection. It encourages the viewer to embrace mindfulness and introspection and appreciate the beauty and complexity of the human form.





11.5" x 8" 11.5" x 8"





11.5" x 8"



- Abstract rendition of Mickey Mouse, complete with a tuxedo, silver gloves, and a wand
- Mickey depicted leaving for a party, exuding confidence and sporting a smile that shows
- About style, passion, animal magnetism, charisma and the star power of the personality

14" x 10"



- Epitome of serenity
- His peaceful presence is captured in this garden sculpture
- Moon shines over him as he sits in tranquil contemplation.
- His eyes are at ease, yet they touch our soul, and his silence speaks volumes.
- Even the cool grass under him seems to be in awe of his composure.

- Sets it apart is that the ice cream is made to look like cement, in shades of gray, and the wall is made to look like ice. And to top it off, there is a tongue licking the ice cream! This painting captures the moment of savoring and satisfying





- Naturalist who discovered and established the fact that all species of life have evolved and originated from common ancestors over time through the process of natural selection.